



# Shepherd

## 45' MOTOR YACHT

The Shepherd 45' Motor Yacht is the ultimate choice of the discerning yachtsman who considers the most important factors in the selection of his motor yacht to be quality in materials and construction, distinctive and distinguished styling and enviable performance.

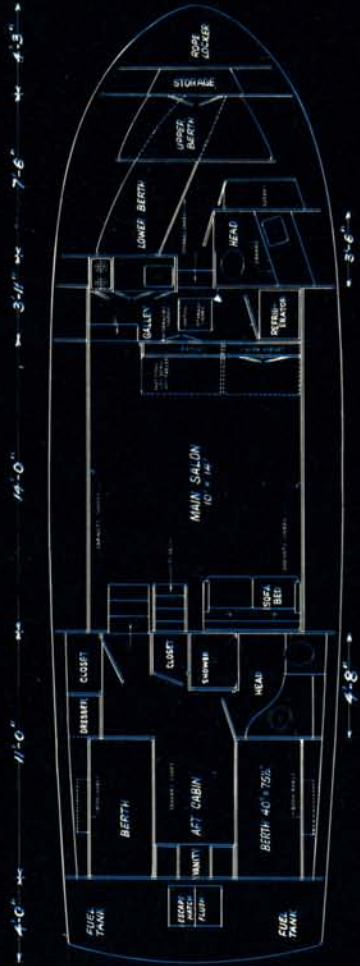
For 1964 cabin lines have been refined, incorporating gentle compound curves indicating the very latest trends in design. Both upper and lower windshields have hooded roof sections. A trim full-width seat with moulded fibreglass housing is styled into the forward window area. Satin metal flashing along lower cabin sides and upper windshield enrich the appearance. The flush level deck is planked with solid teakwood.

In comfort, convenience and tasteful eye appeal the main salon obviously reflects a woman's influence. The spacious, deep-carpeted floor area with its generous window sections and the plentiful storage behind the rattan panelled cabinet doors lining each side of the salon show the forethought that went into the well-planned layout. The beverage cabinet and hideabed, in upholstery blending with the drapery and carpet, are standard equipment. Both main salon and master stateroom are panelled in rich teakwood, hand rubbed to an opulent finish.

The aft stateroom luxuriates in such features as two full length closets, a built-in vanity with chair, a large chest of drawers, and a toilet room with an enclosed stall shower. This 45' model is also available with an optional guest stateroom aft.

The forward cabin has its own toilet room, a large hanging locker and ample stowage.

The galley takes advantage of the full beam of the boat and includes a large electric refrigerator and stove-oven combination. Between the galley and the main salon the upper half of the divider is hinged down to form delightful snack bar facilities.



*Main Salon Looking Aft*







*Master Stateroom Looking Aft*



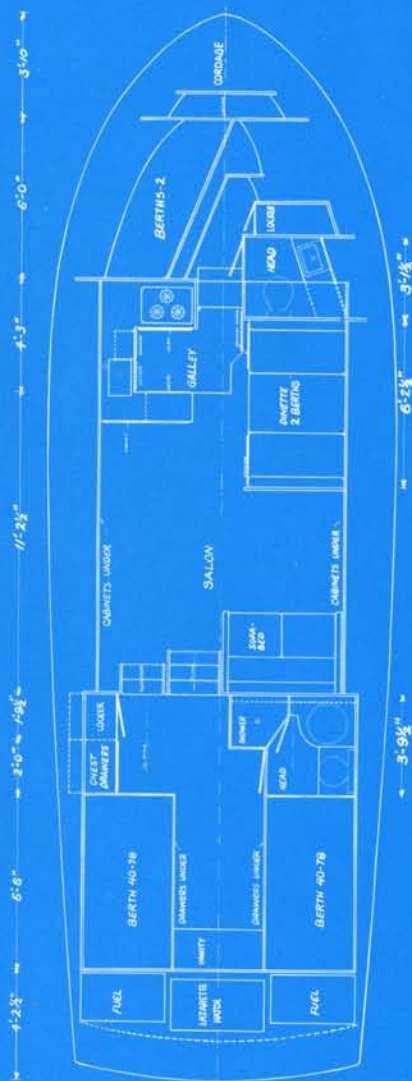
*Galley Area*



**STANDARD EQUIPMENT INCLUDES:** Hard-top; teak decks fore, aft and sides; bow pulpit and side stanchions; laminated safety plate glass throughout; deluxe helmsman's chair; heavy duty windshield wiper; automatic pressure water system; 110V hot water system; 110V refrigerator; stove-oven combination; electric head aft; enclosed shower; screens and drapes; two auto-electric bilge pumps; two blowers; shore plug and seven 110V double outlets; many other luxury items.

Standard twin engines of 280 hp each give top speed of 25 mph; larger gasoline engines and diesel engines are available. Fuel capacity is 350 Imperial gallons (438 U. S. gals.) and fresh water capacity is 100 Imperial gallons (125 U. S. gals.).





Master Stateroom Looking Forward



Main Salon Looking Forward

## 40' MOTOR YACHT

A welcome new addition to the Shepherd family is the 40' flush deck aft stateroom Model. A most impressive low silhouette has been achieved.

The flush aft deck provides a roomy relaxation area for sun and fun. Across the forward window is a full width seat. The main salon, measuring eleven by nine, features a hideabed and generous storage behind sliding panels along both sides of the salon. An extra-wide dinette (at window level) is opposite the functional U-shaped galley which includes 110V refrigeration and propane stove as standard equipment. There is ample storage in the galley, with a beverage cabinet on the salon side.

You will particularly like the aft stateroom, which includes a closet, built-in chest of drawers and vanity with stool, in addition to a large toilet room with a full-size stall shower. Hot and cold pressure water is standard. Your own choice of colour coordinated interior is one of the added pleasures of ordering this custom-crafted 40 foot model.

The forward cabin has a private toilet room, hanging locker and abundant storage space. The entire interior is finished in hand rubbed mahogany.

The conventional layout accommodates eight; however there are various choices in arrangement.

Standard twin power is 225 hp each with larger engine options and diesel options.

As outstanding as the styling is the remarkable performance of this 40' which provides a level, soft ride throughout the entire speed range. Speeds to 30 mph.

\* - Hardtop optional.

**STANDARD EQUIPMENT:** Convertible top; teak decks fore, aft and sides; bow pulpit and side stanchions; auto-pressure water system (hot and cold); enclosed shower; heavy duty windshield wiper; weather curtain; deluxe helmsman's chair; laminated safety plate glass throughout; 110V refrigerator; propane stove; two automatic bilge pumps; two blowers; shore plug and six 110V double outlets; insulated engine compartment; many other plus features.





*Master Stateroom Looking Aft*

 Shepherd

The logo for Shepherd is a stylized, three-dimensional yellow and orange letter 'S' that resembles a compass rose or a stylized 'S' with a central point. To the right of the logo, the word 'Shepherd' is written in a flowing, cursive script font, also in a yellow-to-orange gradient.





# shepherd

Taking everyone by surprise is the completely new Shepherd 35' Model (35' 6" through the centerline)! A deeper V-hull, new from every angle, provides an extremely soft ride, while a distinctive rake in both stem and transom distinguish the 35' as a bold new advance by Shepherd. The raised bulwark forward has given a "shippy" appearance normally found only in the most expensive luxury yachts. A truly beautiful cabin has been moulded of one-piece fibreglass with a seat across the forward window. Metal flashing along the cabin sides accentuates the rich appearance. The upper windshield has been canted more and the framework trimmed for a graceful look.

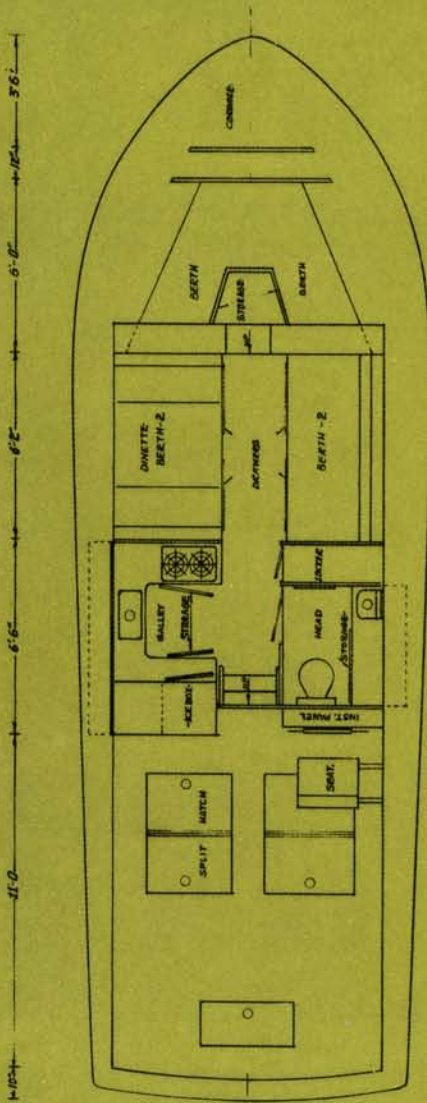
A beam of 12' and headroom of 6' 6" provide a most spacious main cabin. Outstanding feature of the interior is the galley which is set up in a U-shape with 110V Marvel refrigerator at arm level for easy access, and more galley storage than you could imagine . . . even a pull-out breadboard is included! Pleasing colour combinations brighten and accent the already attractive interior, finished in satin mahogany. A wide settee faces the window-level dinette and the private forward cabin is completely separate from the commodious main cabin. The head, decorated in tasteful, pastel vinyl wallpaper, has space for addition of a shower. An extra wide, double-hanging locker completes this picture of convenience and comfort. With twin power options to 560 hp, speeds of 38 mph are possible.

**STANDARD EQUIPMENT INCLUDES:** Convertible top; teak decks fore, aft and sides; laminated safety plate glass throughout; automatic pressure water system; heavy duty windshield wiper; 110V Marvel Refrigerator; automatic bilge pump; blower; screens and drapes; shore plug and 3 110V double outlets; many other desirable extras.

*Dinette Settee Arrangement Looking Aft*



*Dinette Settee Arrangement Looking Forward*





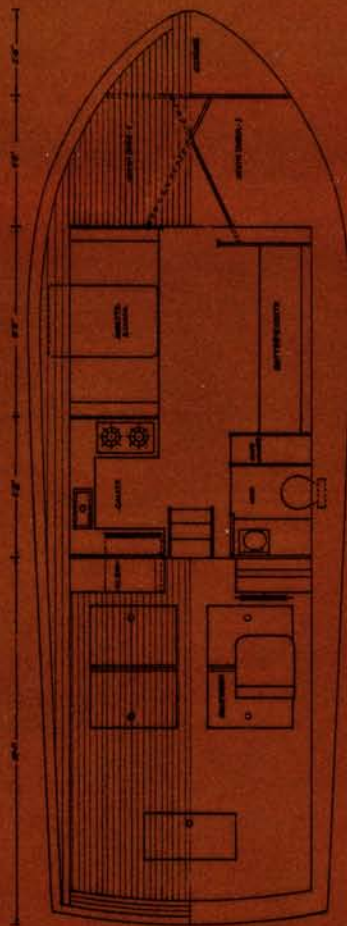
# 35' EXPRESS CRUISER







# Shepherd



Salon and Galley Area Looking Forward

Following on the success of last year's 28' deep V-hull design, the 30' Express achieves a wonderful ride by employing a unique hull construction. Planks of white pine are edge-fastened and glued, then sprayed with BioMet wood preservative. The outside is covered with four layers of fibreglass and the inside with two layers. The strength resulting from this type of construction is extraordinary and the ride in rough water conditions is unbelievably soft.

The cabin roof section has been moulded of one-piece fibreglass. To keep maintenance at a minimum, teak has been used for all decks, formica for bridge counter tops, epoxy paints on fibreglass areas and polyurethane varnish on bright work.

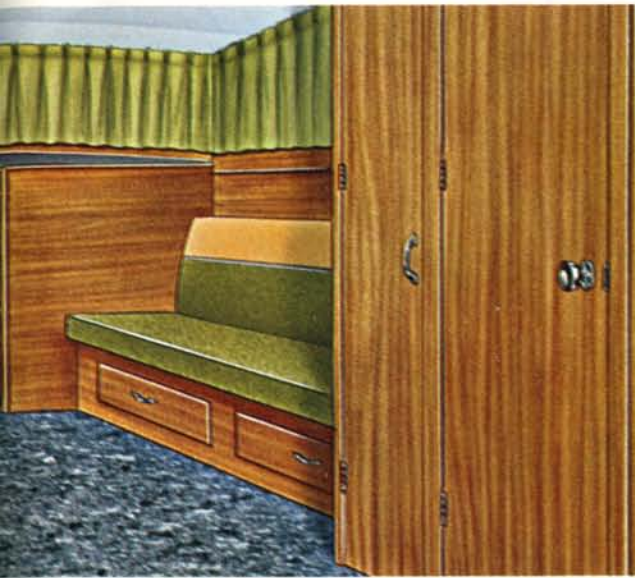
The 10' 6" beam and 6' 3" headroom give a delightfully roomy main cabin. The extra-width dinette is at window level. A settee on the starboard side is invaluable for group get-togethers — with large V-berths forward provides accommodation for six. The U-shaped galley has an arm-level ice chest and ample storage and counter space. The toilet room features its own sink and vanity. There is a good-sized hanging locker and drawers under the settee and dinette. Deep pile carpeting complements the satin finish of the mahogany paneling. The interior of the 30' Express radiates the rich warmth and attractiveness of glowing wood and luxurious upholstery.

Twin power up to 440 hp give speeds to 34 mph.

**STANDARD EQUIPMENT INCLUDES:** Convertible top; teak decks fore, aft and sides; automatic bilge pump; blower; laminated safety plate glass throughout; Marvel ice chest; automatic pressure water; screens and drapes; 1 heavy duty windshield wiper; deluxe helmsman's chair; shore plug and 2 110V outlets; insulated engine compartment; many other extras.



# 30' EXPRESS CRUISER







# Shepherd

A real eye-catcher is this high styled Shepherd 26-footer with her newly raked stem and transom and one-piece moulded fibreglass cabin roof.

The Sunliner is the deluxe version, but also available is a standard model; the differences are in trim and equipment.

There are two interior arrangements, as well. One has V-berths forward with dinette and the other a settee opposite the dinette. The forward section of the latter model is used for hanging locker and storage space. Both models have toilet rooms with full headroom, along with sink and cabinet.

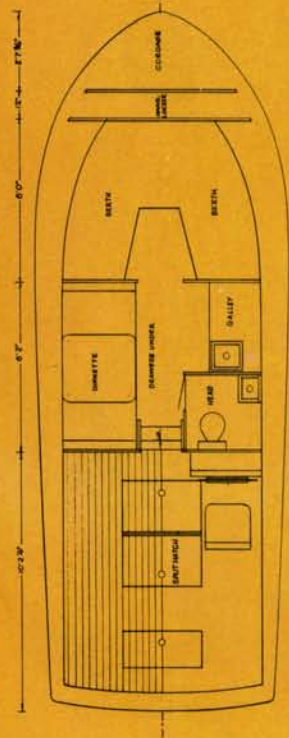
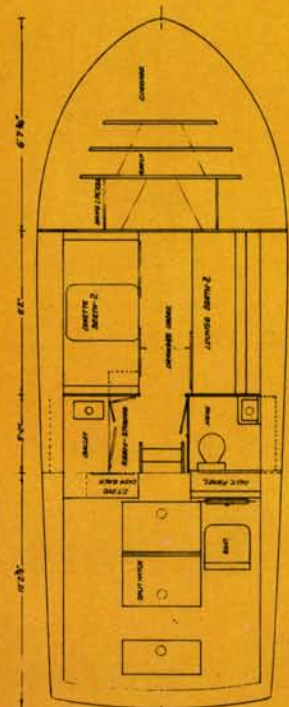
The Sunliner includes convertible top, all-over teak decks, automatic pressure water system, bilge pump, blower, heavy-duty windshield wiper, foldaway stove, drawers under berths, deluxe helmsman's chair and many other items.

The 9' 4" beam and 6' 2" headroom combine to give a roomy interior. This ruggedly constructed model weighs three tons and gives an unbelievably "large-boat" ride. Single engine speeds to 30 mph, twin to 38 mph.

*V-Berth Forward Arrangement*



*—Dinette Settee arrangement*







# 26' EXPRESS CRUISER

SUNLINER and STANDARD





# Shepherd

## 22' - 19' - 16' RUNABOUTS

### 22' V-DRIVE

A new silhouette for the famous Shepherd 22' results from a newly styled bow section which features a more raked stem. This gives this beautiful craft a classic distinction, the cause of much attention wherever she is seen. Although she looks long and low because of her deep, roomy cockpit, you have never felt more secure than in the 22', surrounded by the lavish feel of padded upholstery. Two forward bucket-type seats feature contoured shapes with hand-stitched quilted center sections. Seat backs conceal beverage and stowage lockers and in the fully padded dashboard is a glove compartment. Instruments are individually mounted in a hooded panel. Welcome additions for this year include a neutral start switch and courtesy light. There is a full width rear seat and, with the V-drive installation, sufficient space remains for additional deck chairs and table. Also available is a direct drive. Power options to 325 hp give speeds to 44 mph.





**WHAT MAKES A SHEPHERD?** : The Shepherd name has been built upon quality. In materials, construction, design and craftsmanship, Shepherd has not allowed any compromise. Shepherd workmanship is of the high calibre that can result only from the sincere efforts of men genuinely interested in their work. Each Shepherd craftsman is proud of his important part in maintaining the Shepherd reputation. Seldom has a product been so recognized over the years (thirty-four) as the outstanding leader in its field.

The features below will help to show why Shepherd enjoys this respected position in the industry.

- Honduras mahogany used for side planking and all bright work.
- Double planked Phillipine mahogany bottom with lead bedded canvas between, both layers rivetted together with hundreds of copper rivets, and further strengthened by using silicon bronze screws into the frames.
- Selected white oak used for all framework.

- Frames on 12" centers.
- Batten seam side construction with battens on 6" centers.
- Frames double gusseted; gussets bolted, glued and screwed.
- The entire hull and cabin treated inside and out with heavy penetrating BioMet wood preservative.
- All parts hand sanded before stain and varnish applied.
- Several coats of hand rubbed polyurethane varnish.
- Custom double chromed hardware.
- Teak decks on all cruiser models from 26' Sunliner up.
- Laminated safety plate glass.
- Many other points where close attention to detail results in a finely-finished craft which commands the respect of knowledgeable boatmen the world over.

We take pleasure in inviting you to tour our plant and see for yourself "what makes a Shepherd".

### 19' DIRECT DRIVE

For "out and out" thrills and excitement this Shepherd 19' with power options to 325 hp will give all you ask of her and more! Her graceful stem line results from a newly designed bow section, while her gleaming mahogany hull trimmed in stainless steel distinguishes her as the thoroughbred she is — a Shepherd.

The outstanding performance of this 19' model makes her ideal for watersports. Her ability to turn within her own wake in either direction under high speed is coupled with the softest ride we have ever produced in a 19-footer.

The interior is completely upholstered, with foam padding on dashboard, engine box and covering boards. Hand-stitched, quilted form-fitting seats add to the luxurious cockpit. Standard equipment this year includes neutral start switch and courtesy light.

A tempered glass custom windshield provides distortion-free visibility. Speeds to 45 mph are possible. Also available in V-drive installation.

### 16' COMBO — ALSO AVAILABLE IN V-DRIVE OR DIRECT DRIVE

The Shepherd 16' Combo makes the most of the good features of inboard power coupled with the manoeuvrability of an outdrive.

Here you can enjoy the prestige of owning a Shepherd, yet have portability and versatility. With power up to 160 hp the 16' Combo can really "get up and go", and has plenty of reserve power for multiple water skiers.

Quilted upholstery gives that custom-look associated only with luxury. There are two full seats, the forward one suspended by torsion bars.

Typical of the Shepherd tradition, too, is the 16' Combo's mirror-like finish, but another feature to justify your pride of ownership.

This 16' model is available with either a direct drive or a V-drive installation.





	Length	Beam	Moulded Depth	Draft	Freeboard Fore & Aft	Bottom	Sides	Deck	Seats	Headroom	Engine	Weight (Approx.)	Speed (Approx.)	Sleeping Accommodation	Frames & Battens	Stem & Keel	Fastenings
<b>16' COMBO</b> Also available as Direct Drive or V-Drive	16'	6' 4"	37"	24"	25½" 18"	¾" Double Mahogany ¾" Total	⅞" Honduras Mahogany	⅞" Honduras Mahogany	Bench type front seat with walk-through. Full stern seat		80 to 160 hp	1350 lbs.	Up to 40 mph		Selected white oak	Selected white oak and mahogany	Silicon bronze screws, galvanized bolts
<b>19' RUNABOUT</b> D. D. or V. D.	19' 4"	6' 9"	44½"	25"	26½" 20½"	⅞" Double Mahogany ⅞" Total	⅞" Honduras Mahogany	⅝" Honduras Mahogany	Full back seat, bucket-type front seats		Up to 325 hp	2600 lbs.	Up to 45 mph plus		Selected white oak	Selected white oak and mahogany	Silicon bronze screws, galvanized bolts
<b>22' RUNABOUT</b> D. D. or V. D.	22' 4"	7' 4"	52½"	26"	34½" 24"	⅞" Double Mahogany ⅞" Total	⅞" Honduras Mahogany	⅝" Honduras Mahogany	Full back seat, bucket-type front seats		Up to 325 hp	3000 lbs.	Up to 44 mph		Selected white oak	Selected white oak and mahogany	Silicon bronze screws, galvanized bolts
<b>26' EXPRESS CRUISER</b> Standard & Sunliner	26' 1"	9' 4"	66"	27"	45½" 37"	½" Double Mahogany 1" Total	½" Honduras Mahogany	Vinyl over ⅝" plywood on std. model. ½" teak planking over ½" plywood on Sunliner	1 helmsman's chair, dinette, settee	6' 2"	Up to twin engines of 380 hp	5900 lbs.	Single: 30 mph Twin: 38 mph	4	Selected white oak	Selected white oak and mahogany	Silicon bronze screws, galvanized bolts
<b>30' EXPRESS CRUISER</b>	30'	10' 6"	72"	*30"	48" 42"	⅝" white pine planks covered inside and out with fibreglass ⅞" Total	Same construction on sides as on bottom	½" teak planking over ½" plywood	1 helmsman's chair, dinette, V-berths settee	6' 3"	Twin engines up to 420 hp	8000 lbs.	Up to 34 mph	6			Brass screws
<b>35' EXPRESS CRUISER</b>	35' 6"	12'	72"	30"	60" 43"	½" Double Mahogany 1" Total	⅝" Honduras Mahogany	½" teak planking over ½" plywood	1 helmsman's chair, dinette, settee, V-berths forward	6' 6"	Twin engines up to 560 hp; diesel optional	11,000 lbs.	Up to 38 mph	6	Selected white oak	Selected white oak and mahogany	Silicon bronze screws, brass screws galvanized bolts
<b>40' MOTOR YACHT</b>	40'	12' 11"	91"	33"	66" 53½"	⅝" Double Mahogany 1¼" Total	⅝" Honduras Mahogany	½" teak planking over ½" plywood	1 helmsman's chair, dinette, 1 foldaway, 2 berths aft, double berths forward	6' 5"	Twin engines up to 560 hp; diesel optional	19,500 lbs.	Up to 30 mph	8	Selected white oak	Selected white oak and mahogany	Silicon bronze screws, brass screws galvanized bolts
<b>45' MOTOR YACHT</b>	45'	14'	102"	36"	72" 64"	⅝" Double Mahogany 1¼" Total	¾" Honduras Mahogany	½" teak planking over ⅝" plywood	1 helmsman's chair, 1 foldaway, 2 berths aft, double berths forward	6' 5"	Twin engines of 650 hp; diesel optional	26,000 lbs.	Up to 25 mph	6-8	Selected white oak	Selected white oak and mahogany	Silicon bronze screws, brass screws galvanized bolts

**STANDARD EQUIPMENT:—**

**16' COMBO:** lifting rings fore and aft; unicleats; cleats; sheer mouldings; running lights; chocks; sheaves; L.H. glove compartment; garboard drain; torsion bar suspended front seat; full controls and instrumentation.

**19' RUNABOUT:** lifting rings fore and aft; unicleats; cleats; sheer mouldings; running lights; chocks; 2 pr. step plates; electric horn; 2 chrome transom vents; garboard drain; vent windows; tempered glass wraparound windshield; 2 mahog. beverage cabinets with fold down table tops; hydraulic reverse; courtesy light; neutral start switch.

**22' RUNABOUT:** lifting rings fore and aft; cleats; sheer mouldings; running lights; unicleats; 2 pr. step plates; electric horn; chocks; cutwater; 2 chrome transom vents; garboard drain; vent windows; tempered glass wraparound windshield; 2 mahog. beverage cabinets with fold down table tops; hydraulic reverse; courtesy light; neutral start switch.

**26' STANDARD EXPRESS CRUISER:** electric bilge pump; electric horn; lights; 6 instrument panel; alcohol stove; s.s. sink; icebox; fresh water circulating pump; garboard drain; enclosed head with sink; mirror

and cupboard; helmsman's chair; cabin hand rails; vinyl decks all over; screens and drapes; window in cabin door; gates in both railings; vent F.B. windows; bow lifting ring and stern lifting sockets; mahog. lighted mast, stern flagpole; gate valves on engine(s) and head; fully bonded against electrolysis; deep pile carpet; rollaway for'd hatch screen; all necessary cleats, chocks, bits and unicleats; s.s. moulding; hydraulic reverse.

**26' SUNLINER EXPRESS CRUISER:** electric bilge pump; electric horn; hinged engine hatch; convertible top; s.s. bow railing; laminated safety plate

glass throughout; teak decks, fore, aft and sides; drawers under berths; foldaway stove; s.s. sink; automatic pressure water system; screens and drapes; dish locker; 1 w/s wiper; running lights; 6 instrument panel; garboard drain; enclosed head with sink, mirror and cupboard; helmsman's chair; cabin hand rails; window in cabin door; gates in both railings; vent F.B. windows; bow lifting ring and stern lifting sockets; mahog. lighted mast; mahog. stern flagpole; gate valves on engine(s) and head; fully bonded against electrolysis; deep pile carpet, rollaway for'd hatch screen; all necessary

cleats, chocks, bits and unicleats; s.s. moulding; hydraulic reverse; shore plug and 2-110V double outlets, blower, window locks.

**30' EXPRESS CRUISER:** electric bilge pump; twin trumpet chrome horns; hinged engine hatches; laminated safety plate glass throughout; teak decks fore, aft and sides; drawers under berths; built in Marvel ice chest; alcohol stove; s.s. sink; automatic pressure water system; screens and drapes; rollaway for'd hatch screen; dish locker; 1 w/s wiper; running lights; complete instrumentation; garboard drain; enclosed toilet

room with vanity, sink, mirror and locker space; deluxe custom helmsman's chair; cabin hand rails, window in cabin door; gates in both railings; ventilating F.B. windows; shore plug and 3-110V double outlets, blower, convertible top, window locks; mahog. lighted mast; mahog. stern flagpole; blower; gate valves on engines and head; fully bonded against electrolysis; deep pile carpet; all necessary cleats; chocks, bits, unicleats; s.s. moulding and trim; marmac engine control; hydraulic reverse; engine compartment insulated.



Windshield	Instrument Panel	Gasoline Tank	Rudder & Propeller	Strut	Shaft	Shaft Log	Steering	Steering Wheel	Controls Gearshift	Floor Covering	Throttle Control	Upholstery	Seat Cushions	Hardware	Flagpole	Water Tank	Finish
Plexiglass wraparound aluminum mouldings top and bottom	Lighted; water temp., tach., ammeter, oil, light switches	16½ gal.					Rack and pinion	Deluxe with horn ring	Single lever	Vinyl carpet	Single lever	Vinyl jersey backed	Foam	Stainless steel, chrome plated brass, and aluminum	Mahogany, lighted		Deck, topsides and transom varnished and painted, hull interior oiled and painted, bottom outside painted with anti-fouling copper-bronze
Tempered glass wraparound	Lighted; water temp., tach., ammeter, oil, gas gauge, lighter, light switches, nameplates	21 imp. gals. stainless steel	Manganese bronze	Manganese bronze with B. J. rubber bearings	Tobin bronze	Bronze with syntron seal	R.H. drag link	Deluxe with horn ring	On steering column	Vinyl carpet	On steering column	Vinyl jersey backed	Foam	Stainless steel, chrome plated brass, and aluminum	Mahogany, lighted		Deck, topsides and transom varnished and painted, hull interior oiled and painted, bottom outside painted with anti-fouling copper-bronze
Tempered glass wraparound	Lighted; water temp., tach., ammeter, oil, gas gauge, lighter, light switches, nameplates	30 imp. gals. stainless steel	Manganese bronze	Manganese bronze with B. J. rubber bearings	Tobin bronze	Bronze with syntron seal	R.H. drag link	Deluxe with horn ring	On steering column	Vinyl carpet	On steering column	Vinyl jersey backed	Foam	Stainless steel, chrome plated brass, and aluminum	Mahogany, lighted		Deck, topsides and transom varnished and painted, hull interior oiled and painted, bottom outside painted with anti-fouling copper-bronze
Standard: plate glass throughout. Sunliner: Laminated safety plate glass throughout. Ventilating F. B. windshield	Lighted; water temp., tach., ammeter, oil, gas gauge, lighter, light switches, nameplates	Single: 45 imp. gals. Twin: 2-30 imp. gals.	Manganese bronze	Manganese bronze with B. J. rubber bearings	Tobin bronze	Bronze with syntron seal	Rack and pinion with cable	Ship's wheel	Hydraulic on instrument panel	Standard: carpet. Sunliner: carpet with underlay	On instrument panel	Vinyl jersey backed, fabrics	Foam	Stainless steel, chrome plated brass, and aluminum	Mahogany	Galvanized 20 imp. gals.	Deck, topsides and transom varnished and painted, hull interior oiled and painted, bottom outside painted with anti-fouling copper-bronze
Laminated safety glass throughout ventilating F.B. windshield	Lighted; water temp., tach., ammeter, oil, gas gauge, lighter, light switches, nameplates	2-45 imp. gals. stainless steel	Manganese bronze	Manganese bronze with B. J. rubber bearings	Tobin bronze	Moulded in fiberglass	Rack and pinion with cable	Ship's wheel	Hydraulic on instrument panel	Carpet with underlay	On instrument panel	Vinyl jersey backed, fabrics	Foam	Stainless steel, chrome plated brass, and aluminum	Mahogany	Galvanized 35 imp. gals.	Hull outside painted, cabin top painted, interior woodwork all finished in natural satin varnish, bottom and sides up to waterline, transom varnished.
Laminated safety glass throughout ventilating F.B. windshield	Lighted; water temp., tach., ammeter, oil, gas gauge, lighter, light switches, nameplates	2-60 imp. gals. stainless steel	Manganese bronze	Manganese bronze with B. J. rubber bearings	Tobin bronze	Bronze with syntron seal	Rack and pinion with cable	Ship's wheel	Hydraulic on instrument panel	Carpet with underlay	On instrument panel	Vinyl jersey backed, fabrics	Foam	Stainless steel, chrome plated brass, and aluminum	Mahogany	Galvanized 35 imp. gals.	Deck, topsides and transom varnished and painted, hull interior oiled and painted, bottom outside painted with anti-fouling copper-bronze
Laminated safety glass throughout ventilating F.B. windshield	Lighted; water temp., tach., ammeter, oil, gas gauge, lighter, light switches, nameplates	2-126 imp. gals. hot dipped galvanized	Manganese bronze	Manganese bronze with B. J. rubber bearings	Tobin bronze	Bronze with syntron seal	Rack and pinion with cable	Ship's wheel	Hydraulic on instrument panel	Carpet with underlay	On instrument panel	Vinyl jersey backed, fabrics	Foam	Stainless steel, chrome plated brass, and aluminum	Mahogany	Hot dipped galvanized 100 imp. gals.	Deck, topsides and transom varnished and painted, hull interior oiled and painted, bottom outside painted with anti-fouling copper-bronze
Laminated safety glass throughout ventilating F.B. windshield	Lighted; water temp., tach., ammeter, oil, gas gauge, lighter, light switches, nameplates	2-150 imp. gals., hot dipped galvanized	Manganese bronze	Manganese bronze with B. J. rubber bearings	Tobin bronze	Bronze with syntron seal	Rack and pinion with cable	Ship's wheel	Hydraulic on instrument panel	Carpet with underlay	On instrument panel	Vinyl jersey backed, fabrics	Foam	Stainless steel, chrome plated brass, and aluminum	Mahogany	Hot dipped galvanized 100 imp. gals.	Deck, topsides and transom varnished and painted, hull interior oiled and painted, bottom outside painted with anti-fouling copper-bronze

**35' EXPRESS CRUISER:** automatic electric bilge pump; blower; automatic pressure water system; marmac engine controls; hydraulic reverse; twin trumpet chrome horns; hinged engine hatches; laminated safety plate glass throughout; teak decks fore, aft and sides; drawers under berths; built in Marvel ice chest; alcohol stove; s.s. sink; screens and drapes; rollaway for'd hatch screen; dish locker; 1 heavy duty w/s wiper; running lights; complete instrumentation; garboard drain; enclosed toilet room with vanity, sink, mirror, drapes and locker space; deluxe custom helmsman's chair; cabin hand rails; window in cabin door;

gates in both railings; ventilating F.B. w/s; bow lifting ring and stern lifting sockets; mahog. lighted mast with yardarm; mahog. stern flagpole; blower; gate valves on engine and heads; fully bonded against electrolysis; shore plug and 3-110V double outlets, 110V. Refrigeration; window locks; deep pile carpet; all necessary cleats, chocks, bits, unicleats; s.s. moulding and trim; engine compartment insulated; convertible top; hatch with deadlight. Seat & cushions across for'd cabin window.

**40' MOTOR YACHT:** two automatic electric bilge pumps; two bilge blowers; automatic pressure water system; marmac engine

controls; hydraulic reverse; twin trumpet chrome horns; laminated safety plate glass throughout; teak decks fore, aft and sides; drawers used throughout; 110V refrigeration, propane stove, enclosed stall shower, with 10 gal. hot water system on 110V system; s.s. sink; screens and drapes; rollaway for'd hatch screen; dish locker; 1 heavy duty w/s wiper; international running lights; complete instrumentation; garboard drain; 2 enclosed toilet rooms; deluxe custom helmsman's chair; cabin hand rails; window in cabin door; ventilating F.B. w/s; mahog. lighted mast with yardarm; mahog. stern flagpole; gate

valves on engines and heads; fully bonded against electrolysis; deep pile carpet throughout; all necessary cleats, chocks, bits, unicleats; s.s. moulding and trim; engine compartment insulated; shore plug and 6-110V double outlets, 2-110V reading lamps in aft stateroom; convertible top; mahog. beverage cabinet; 1 hideabed; s.s. bow railing and side stanchions; limber chain; hatch with deadlight; all cabin and engine compartment lights; engine compartment floor lined with linoleum; ladder in escape hatch; weather curtain; window locks, Seat & cushions across for'd cabin window.

**45' MOTOR YACHT:** two automatic electric bilge pumps; two bilge blowers; automatic pressure water system; 10 gal. hot water "galleymaid" system; marmac engine controls, hydraulic reverse; twin trumpet horns; laminated safety plate glass throughout; shore plug and 7-110V double outlets, 2-110V reading lamps in aft stateroom; teak decks fore, aft and sides; s.s. sink; hideaway stove enclosed in counter; screens and drapes; rollaway for'd hatch screen; dish locker; 1 heavy duty w/s wiper; international running lights; complete instrumentation; garboard drain; limber chain; 2 enclosed toilet rooms, aft one

with enclosed shower; deluxe custom helmsman's chair; cabin hand rails; window in cabin door; ventilating F.B. w/s; mahog. lighted mast with chrome yardarm; mahog. stern flagpole; gate valves on engines and heads; fully bonded against electrolysis; deep pile carpet throughout; all necessary cleats, chocks, bits, unicleats; s.s. moulding and trim; engine compartment insulated; hardtop; teakwood beverage cabinet; 1 hideabed; s.s. bow railing and side stanchions; hatch with deadlight; all cabin and engine compartment lights; aft head electric; engine compartment floor lined with linoleum; lad-

der in escape hatch; fold down tables for dinettes; 110V 9 cu. ft. refrigerator, propane stove, & oven, weather curtain; window locks; hand bilge pump, vanity chair, three mirrors; galley exhaust fan; drawers used throughout. Seat & cushions across for'd cabin window.

#### ABBREVIATIONS:

D.D.—Direct Drive  
V.D.—V-Drive  
F.B.—Flying Bridge  
H.T.—Hardtop  
hp—Horsepower  
R.H.—Right Hand  
L.H.—Left Hand  
s.s.—Stainless Steel  
w/s—Windshield

Specifications subject to change without notice



**SHEPHERD BOATS LIMITED NIAGARA - ON - THE - LAKE ONTARIO CANADA**